

# 6181 Integrated Display Computers



## Performance and Advanced Models

### Features and Benefits

Allen-Bradley Integrated Display Computers combine leading edge Intel technology and state-of-the-art hardware for an enhanced user experience.

#### High-Performance Processing

- Fourth-Generation Intel Core™ i-series 64-bit processors capable of hyper-threading for improved multitasking
- USB 3.0 ports allow for high-speed data transfer

#### Ease-of-Use

- Projected capacitive multi-touch models increase scalability and control of data on the screen
- User Interface Button (UIB) provides one-touch access to the BIOS
- Installation assist clip helps improve system integration with one-person install

#### Efficient Management

- Intel AMT 9.0 technology enables remote management capabilities
- Integrated backup/restore and diagnostic capabilities built into BIOS
- Field replaceable components (RAM, SSD, ODD, power supply) help simplify hardware maintenance and upgrades



6181 Integrated Display Computer Performance and Advanced Models

The Allen-Bradley® 6181 Integrated Display Computers form a dynamic portfolio, with Performance and Advanced Models that provide all-in-one industrial PC options to help meet your application needs.

### Performance and Advanced Models

Performance and Advanced models are equipped with the latest features designed to meet the most demanding integrated display computing needs. These rugged industrial computers help provide flexibility to your application with the combination of multi-touch screens, high performing processors, field replaceable components and remote management capabilities. Additionally, the user interface button and installation assist clip help enhance your user experience.

LISTEN.  
THINK.  
SOLVE.®

## Performance and Advanced Models

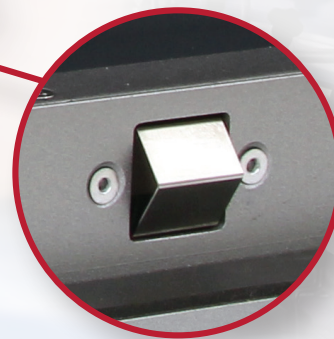
The Allen-Bradley 6181 Integrated Display Computers offer an open computing platform with plenty of horsepower to run most client, station and even virtualized software architectures. These industrial computers were designed, built and tested as an ideal platform for FactoryTalk® View visualization software.

### Performance

- i3 CPU with 4 GB RAM and single-touch resistive screens
- Core-i3 4102E – dual core 1.6 GHz with hyperthreading
- Screen sizes/form factors
  - 4:3 aspect ratio display format: 12" (305 mm) and 15" (381 mm)
  - 5:4 aspect ratio display format: 17" (432 mm) and 19" (483 mm)
- Fanless design helps decrease maintenance time

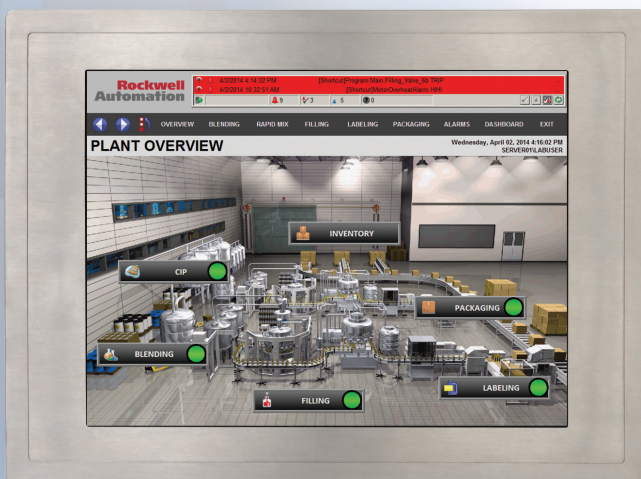
### Advanced

- i7 CPU with 8 GB RAM and multi-touch projected capacitive screen
- Core-i7 4700EQ quad core 2.4 GHz with hyperthreading
- Powerful remote management capabilities with Intel AMT 9.0 Technology
- Screen sizes/form factors
  - 4:3 aspect ratio display format: 15" (381 mm)
  - 5:4 aspect ratio display format: 17" (432 mm) and 19" (483 mm)
  - 16:9 (widescreen) aspect ratio display format: 15.6" (396.3 mm) and 18.5" (470 mm)



### Streamlined Installation

- Drop-in replacement and easy cable wiring for modernization from preceding 6181P/F Series E model
- Improved system integration with **installation assist clip**



*Performance Models are available with stainless steel bezels to meet food and beverage industry equipment regulations.*

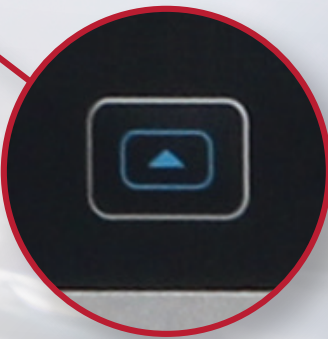


### Instant Information

- Easily access key information in BIOS about battery status, catalog/win/mfg date codes
- View PC hardware status on aluminum bezel models with **LED indicators**

### Powerful System

- High-performance processing power and speed with 64-bit operating systems
- Available System Watchdog Timer and hardware monitor utilities
- Rich graphic capabilities with Intel HD graphics 4600



### Easy Operation

- Reduce the need for a keyboard or mouse with graphical touch driven screens
- One-touch access to BIOS with **User Interface Button**

## Integrated Display Computers Specifications

For up-to-date specifications, accessories, drivers, manuals and service information, visit [www.ab.com/industrialcomputers](http://www.ab.com/industrialcomputers).

	Performance	Advanced
CPU	Intel i3-4102E	Intel i7-4700EQ
Cores/Speed	2 C/1.6 GHz (hyperthreading)	4 C/2.4 GHz (hyperthreading)
Touchscreen	Single-touch (resistive)	Multi-touch (Pcap)
Bezel Offerings	NDM*, aluminum, stainless steel	NDM*, aluminum
RAM	4 GB DDR3 SODIMM	8 GB DDR3 SODIMM
Storage Media	256 GB MLC SSD or 32 GB SLC SSD, 2: 256 GB MLC SSD RAID on NDM* server models	
Optical Drive	N/A	CD-RW, DVD-RW
Thermal Solution	Fanless	Fan (single/external rear mounted)
USB 3.0	4 rear, 1 front, 1 internal (no front USB port on stainless steel bezel offering)	
Video Output	DVI-I and DisplayPort	
Expansion Slots	1 PCIe 8x slot (optional 1 PCI or 1 PCI + 1 PCIe 4x or 2 PCIe 4x or 2 PCI)	
I/O	2 10/100/1000 Ethernet, 2 RS-232, Audio In/Out/Mic, 2 PS/2, 1 External CompactFlash slot (non-bootable)	
Electrical and Environment Power Requirements	100-240V AC autoranging; 47-63 Hz; 18-32V DC	
Operating System	Windows 10 IoT Enterprise (64-bit), Windows 7 Pro SP1 (64-bit), WES 7 (64-bit), 32-bit OS Support for Windows 7	Windows 10 IoT Enterprise (64-bit), Windows 7 Pro SP1 (64-bit), Windows Server 2008 R2 SP1 (64-bit), 32-bit OS Support for Windows 7
Operating Temperature	0...55 °C (32...131 °F) for NDM*, 12" (305 mm), 15" (381 mm), 17" (432 mm) display sizes 0...50 °C (32...122 °F) for 15.6" (396.3 mm), 18.5" (470 mm) and 19" (483 mm) display sizes	
Vibration Operating	2.0 g	
Shock Operating	15 g	
Mounting Options	Integrated display: panel mount NDM*: wall, table, bookshelf	
Certifications/Regulations	CE marked, ULus listed, RCM/C-Tick, EAC, WEEE, RoHS, KC (Korean)	
Ratings	NEMA 1/12/4/4x (stainless), IP66	

\*Non-display model

**For more information visit:**

**<http://ab.rockwellautomation.com/computers/integrated-display-computers/bulletin-6181>**

Allen-Bradley, FactoryTalk, LISTEN. THINK. SOLVE. and Rockwell Software are trademarks of Rockwell Automation, Inc. Trademarks not belonging to Rockwell Automation are property of their respective companies.

**[www.rockwellautomation.com](http://www.rockwellautomation.com)**

### Power, Control and Information Solutions Headquarters

Americas: Rockwell Automation, 1201 South Second Street, Milwaukee, WI 53204-2496 USA, Tel: (1) 414.382.2000, Fax: (1) 414.382.4444

Europe/Middle East/Africa: Rockwell Automation NV, Pegasus Park, De Kleetlaan 12a, 1831 Diegem, Belgium, Tel: (32) 2 663 0600, Fax: (32) 2 663 0640

Asia Pacific: Rockwell Automation, Level 14, Core F, Cyberport 3, 100 Cyberport Road, Hong Kong, Tel: (852) 2887 4788, Fax: (852) 2508 1846