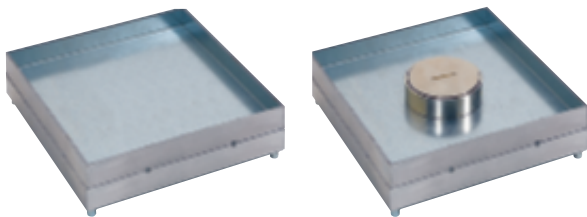
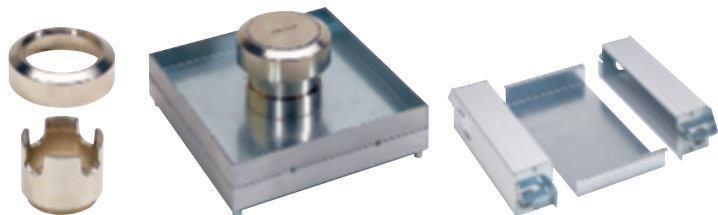


IP 44 floor boxes for tiles/marble



6 896 22

6 896 23



0 896 87

6 896 23 + 0 896 87

6 896 57

Technical characteristics [see e-catalogue](#)

Conform to IEC/EN 60670-23
Compatible with screed floor system

Pack	Cat.Nos	IP 44 lid and trim for tiles/marble	
1	6 896 22	To be installed in backbox Cat.No 0 896 04 for screed floor system Plain cover Edge trim for tile 8 to 24 mm thickness Can be used as access trap for junction, or equipped with 1 kit of vertical supports Cat.No 6 896 57 No cable exit	
1	6 896 23	With central cable exit Edge trim for tile 8 to 24 mm thickness To be equipped with 1 kit of vertical supports Cat.No 6 896 57 Can be equipped with cable exit accessory Cat.No 0 896 87	
1	0 896 87	Cable exit accessory For IP 44 or IP 66 floor boxes with central cable exit Cat.Nos 6 896 23 and 0 896 86	
1	0 896 04	Specific backbox for IP 44 lids and trims for tiles/marble For installation of floor boxes Cat.Nos 6 896 22/23 for screed floor system	
1	6 896 57	Vertical support for Arteor or Mosaic Programme mechanisms For German and French standard wiring accessories Kit of 2 supports for 8 modules	

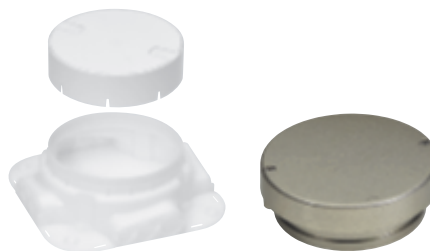
IP 66 floor boxes - 4 modules

for raised or concrete floors



0 880 61 equipped with Mosaic mechanisms

0 880 64 equipped with Mosaic mechanisms



0 880 69

0 880 62

Technical characteristics [see e-catalogue](#)

Conform to IEC/EN 60670-23

Pack	Cat.Nos	IP 66 floor boxes - 4 modules	
1	0 880 61	Supplied with lid and 4-module support frame for Mosaic Programme or Arteor mechanisms To be installed in flush-mounting backbox Cat.No 0 800 69 or directly in raised floor IK 09 with the lid closed Resistance to loads with lid closed: 10000 N With removable lid - for indoor and outdoor use Can be equipped with cable exit accessory Cat.No 0 880 62 IP 66 (when lid is closed) IP 54 (with cable exit accessory Cat.No 0 880 62 and plugs inserted into the sockets) Stainless steel finish	
1	0 880 64	With hinged lid - for indoor use Compatible with angled plugs only Can be equipped with key lock on request IP 66 (when lid is closed) Stainless steel finish	
1	0 880 69	Backbox Auto-adjustable backbox for installing IP 66 floor boxes in concrete floors Supplied with cover Accepts conduits Ø16, 20, 25 mm Minimum screed height: 65 mm	
1	0 880 62	Cable exit For removable lid weatherproof floor boxes Cat.No 0 880 61 Allows the passage of power cords when the plugs are inserted into the sockets inside the floor box Compatible with angled plugs only IP 54 cable exit accessory (with plugs inserted into the sockets)	