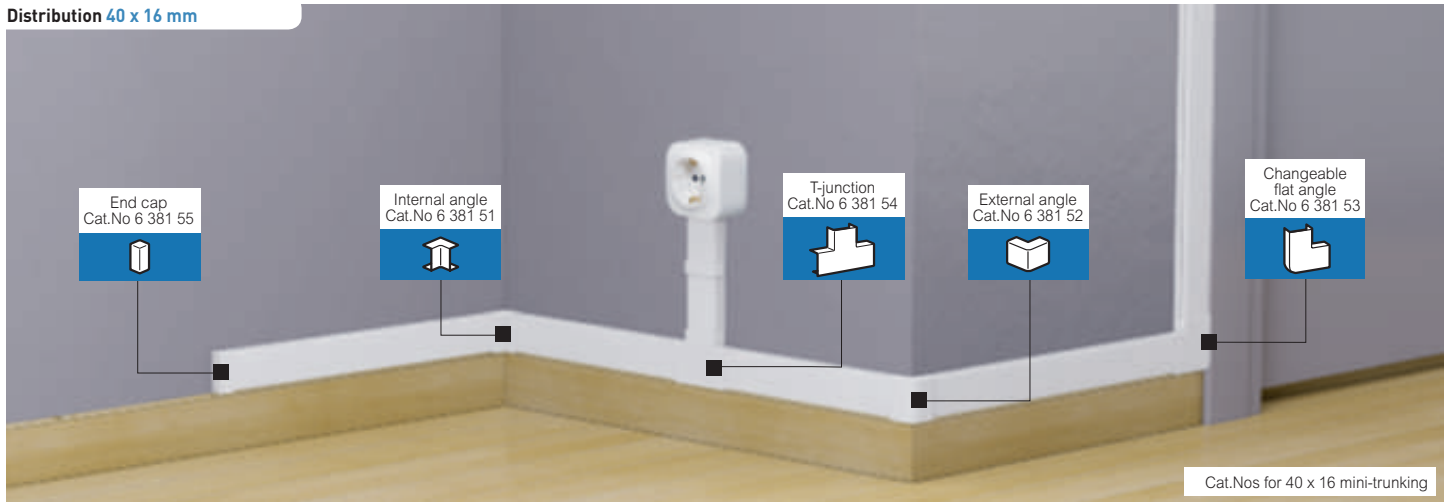


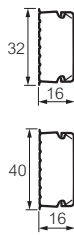
# DLP-S distribution mini-trunking 32 x 16 / 40 x 16 / 50 x 20 / 60 x 20 and 40 x 40

## Distribution 40 x 16 mm

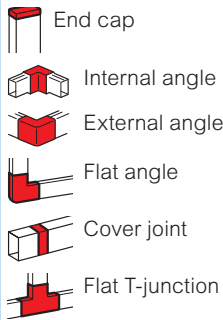


Selection chart **p. 805**  
 Technical characteristics **see e-catalogue**

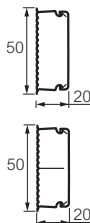
| Pack | Cat.Nos             | 32 x 16 and 40 x 16 mm mini-trunking   |
|------|---------------------|--|
| 80'  | 32 x 16<br>6 381 40 | Without central partition<br>Conform to EN 50085-2-1<br>To be fixed with wall plugs<br>Supplied in 40 lengths of 2 metres<br>With adhesive |
| 36'  | 6 381 49            | Supplied in 18 lengths of 2 metres   |
| 60'  | 40 x 16<br>6 381 50 | To be fixed with wall plugs<br>Supplied in 30 lengths of 2 metres<br>With adhesive   |
| 60'  | 6 381 59            | Supplied in 30 lengths of 2 metres   |



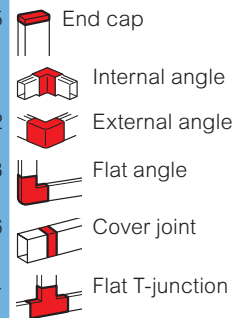
| Pack   | Cat.Nos             | 32 x 16 and 40 x 16 mm mini-trunking | Finishing accessories for 32 x 16 and 40 x 16 mm mini-trunking |
|--------|---------------------|--------------------------------------|--|
| 10     | 32 x 16<br>6 381 45 | 6 381 55                             | End cap  |
| 10     | 6 381 41            | 6 381 51                             | Internal angle   |
| 5   10 | 6 381 42            | 6 381 52                             | External angle   |
| 10     | 6 381 43            | 6 381 53                             | Flat angle   |
| 10     | 6 381 46            | 6 381 56                             | Cover joint  |
| 10     | 6 381 44            | 6 381 54                             | Flat T-junction  |



| Pack      | Cat.Nos             | 50 x 20 and 60 x 20 mm mini-trunking   |
|-----------|---------------------|--|
| 40'   32' | 50 x 20<br>6 381 60 | 60 x 20<br>6 381 70  |
|           |                     | Without central partition<br>Length 2 m<br>Supplied in 20 or 16 length of 2 metres |
| 40'       | 6 381 68            | With central partition<br>Length 2 m<br>Supplied in 20 lengths of 2 metres         |



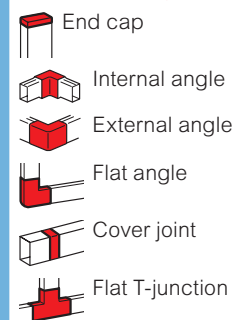
| Pack   | Cat.Nos             | Finishing accessories for 50 x 20 and 60 x 20 mm mini-trunking |
|--------|---------------------|--|
| 5   5  | 50 x 20<br>6 381 65 | 60 x 20<br>6 381 75  |
| 10     | 6 381 61            | 6 381 71   |
| 10   5 | 6 381 62            | 6 381 72   |
| 10   5 | 6 381 63            | 6 381 73   |
| 10   5 | 6 381 66            | 6 381 76   |
| 5   5  | 6 381 64            | 6 381 74   |



| Pack | Cat.Nos  | 40 x 40 mm mini-trunking   |
|------|----------|--|
| 24'  | 6 381 80 | Length 2 m<br>Supplied in 12 lengths of 2 metres<br>Conform to EN 50085-2-1<br>Without central partition |



| Pack | Cat.Nos  | Finishing accessories for 40 x 40 mm mini-trunking |
|------|----------|--|
| 10   | 6 381 85 | End cap  |
| 5    | 6 381 81 | Internal angle                                     |
| 5    | 6 381 82 | External angle                                     |
| 5    | 6 381 83 | Flat angle   |
| 10   | 6 381 86 | Cover joint  |
| 5    | 6 381 84 | Flat T-junction                                    |



| Pack | Cat.Nos  | Adaptors for mounting Forix wiring devices on the mini-trunking |
|------|----------|---|
| 10   | 6 381 07 | For 15 x 10 mm mini-trunking                                    |
| 10   | 6 381 17 | For 20 x 12 mm mini-trunking                                    |
| 10   | 6 381 27 | For 24 x 14 mm mini-trunking                                    |
| 10   | 6 381 37 | For 16 x 16 mm mini-trunking                                    |
| 10   | 6 381 47 | For 32 x 16 mm mini-trunking                                    |
| 10   | 6 381 57 | For 40 x 16 mm mini-trunking                                    |

1: Number of meters in pack