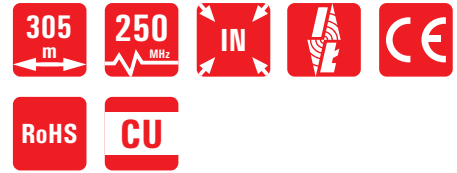
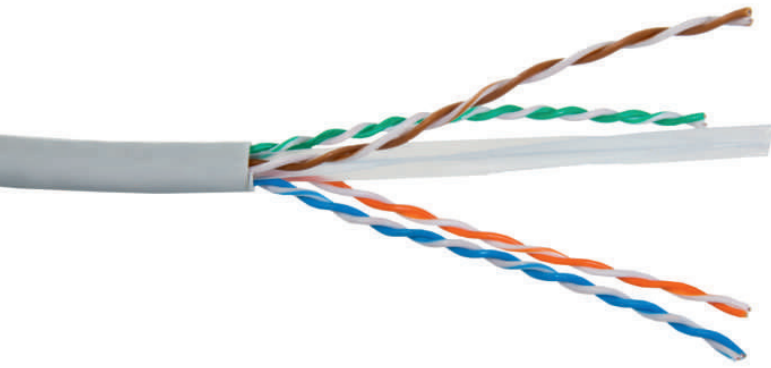


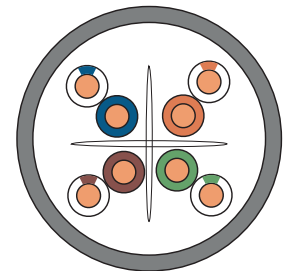
6 UTP



- for indoor use
- high-quality of the workmanship (copper)
- tested (measurement performed on the distance of 90 meters with Fluke Networks DTX-1800 measure)
- meets requirements of cat. 6 UTP
- also available in versions: 5e UTP, 5e FTP, 6 FTP, 7 SFTP, 7A SFTP

Cat. No.: SEC6UTP

SecurityNET installation twisted cable is intended to connect between distribution point of multimedia signals and user's connectors. UTP twisted cable (unshielded) is perfectly suited for installations in computer networks, phone networks, CCTV systems, etc., which may not be exposed to electromagnetic disturbance. It has an outer coating of PVC. The cable meets requirements of ISO / IEC 11801, EN 50173, EIA / TIA 568- B.2 structured cabling.



TECHNICAL DATA:

construction:	4x2	operating temperature:	from -15°C to +60°C
conductor core:	0,55 mm	installation temperature:	from 0°C to +50°C
execution core:	copper wire [Cu]	NVP:	69%
insulation core:	HDPE 0,95 mm	Delay Skew (ns/100 m):	≤45
thickness:	0,55 mm	bending radius:	8 x diameter
nominal diameter:	6,2 mm PVC	pair division:	yes
characteristic impedance 1-250 MHz:	100 Ω	color:	grey
max. resistance 1-250 MHz:	9,5 (Ω/100m)		

Transmission frequency	1	4	10	16	20	31,25	62,5	100	200	250
NEXT ≥ dB/100 m	74,3	65,3	59,3	56,2	54,8	51,9	47,4	44,3	39,8	38,3
Attenuation ≤ dB/100 m	2	3,8	6	7,6	8,5	10,7	15,4	19,8	29	32,8
Return loss ≥ dB/100 m	20	23	25	25	25	23,6	21,5	20,1	18	17,3
PSNEXT ≥ dB/100 m	72,3	63,3	57,3	54,2	52,8	49,9	45,4	42,3	37,8	36,3
ELFEXT ≥ dB/100 m	67,8	55,8	47,8	43,7	41,8	37,9	31,9	27,8	21,8	19,8
PSELFEXT ≥ dB/100 m	64,8	52,8	44,8	40,7	38,8	34,9	28,9	24,8	18,8	16,8
Delay ≤ ns/100 m	552	547	545	543	542	541	540	539	538	537